

Issue 145

JUNE 26

£1.00



The Anchor

All Saints Rebuild

From the Fire to the Future



Fund-raising for us. (See inside)

From The Editors.

We are back with editions each month during the summer. We manage 10 editions each year, so will probably do a double edition in December and January.

Highlights of this edition:

Re-build up-date.

Fund-raising.

Gardens. Thanks for your response to our theme.

Japan. A fascinating trip.

Mudford Sea Scouts.

Blessing of the Waters. Well done Rev Wendy,

A quiz from Mary Thomas. Answers on page 42

Safeguarding.

Lots of photos.

Our new Church Warden.

Don't forget to look at the regular and fund-raising events.

Next Edition: Theme: Experiences of the Mudford Arts festival and its connection with All Saints church . Get the grey cells working!!

Deadline date: 18th June.

Joint Editors: Vikki Miller and John Ward

Contact Vikki on bob_and_vikki@yahoo.co.uk

and/or John on: jfaward@btinternet.com.

Editorial Team: Judy and Tony Eden and Hetty Ward.

Dear friends,

I can't quite believe that we are soon to enter the month of June- where have the first 4 months of the year gone?



In May we celebrated the Feast of Pentecost. The name just comes from the word 'fifty' – 50 days since Easter. It is a very special time in the church calendar when we celebrate the gift of the Holy Spirit which was poured out upon Jesus' followers in readiness for their grand mission to evangelise the world. It is also known as the birthday of the church, the day when after being empowered by the Holy Spirit, Peter (the fearful one who denied Jesus) boldly preached a powerful sermon and 3000 people came to faith.

As we begin to prepare for the move of All Saints back into our building, we are going to need the empowerment of the Holy Spirit, and the boldness of Peter to share the good news of Jesus with our community. How should we be preparing for this big step?

I want to take us back to Jesus' final instructions to his followers for how they were to prepare for their mission in Acts 1: 4-5. Jesus tells them to stay in Jerusalem and wait for the gift that God the Father promised them, which is to be baptized in the Holy Spirit.

Waiting and being still is not always easy, is it. We want to get on with everything now, make all our plans and get busy. There is a time for that of course, and planning is essential. Jesus knew that his followers needed rest, they needed time to recover from the grief, trauma and adrenaline of his death and resurrection. They needed to be in the right frame of mind and body for their big challenge. They needed to be ready to lay down their own ideas to be able to catch the wind and vision of the Spirit to come.

This is the reason why I have asked to take my sabbatical at this point in my ministry journey. I want to take time for prayer, rest, and envisioning by

the Holy Spirit before the grand mission of re-opening our church. I hope that you all too will be able to carve out some time for quiet, for prayer and to listen to God. We all need this so that we can be empowered and ready. Taking time to pray together is critical to our successful re-entry, in home groups, in our Wednesday morning prayer group, before church at 9:30am in the Maberly Room, and in many other ways too.

Let us be those of whom Jesus can say we will 'receive power when the Holy Spirit comes on us, and we will be his witnesses' in Mudeford, Somerford, Christchurch and all those with whom we come into contact.

God bless you all as we wait for his Spirit's empowerment.

Rev Canon Kathy Hicken



BIBLE STUDY

The Thursday evening Bible study group meets at 7pm at 3 Minterne Road, where Judy and Tony Eden kindly welcome us to their home.

If you are interested in joining us, please contact Mary Thomas

Newcomers are always very welcome.

Avon Reach Charity Quiz Night

18/5/26

Avon Reach recently brought the local community together for a fantastic charity quiz night in support of the rebuild project at All Saints Church Mundeford. The evening welcomed residents, staff, relatives, friends, and members of the church community for a fun-filled night of laughter, teamwork, and fundraising.

The exciting quiz featured eight varied rounds including cheese, service stations, music and general knowledge, keeping everyone entertained throughout the evening. Teams worked together enthusiastically, creating a wonderful atmosphere of friendship and community spirit.



Guests also enjoyed a delicious fish, sausage, or vegetarian and chips supper alongside the quiz, while the charity bar and raffle helped raise even more money for the cause. Thanks to the generosity and support of everyone who attended, the event raised an incredible £554 towards the rebuilding of the church.

The winning team of the evening “The confused Jill’s proudly took home £25 along with a bottle of Prosecco Meanwhile, the team finishing in last place, “Egg



Heads,” embraced the fun spirit of the night and proudly accepted the wooden spoon award.

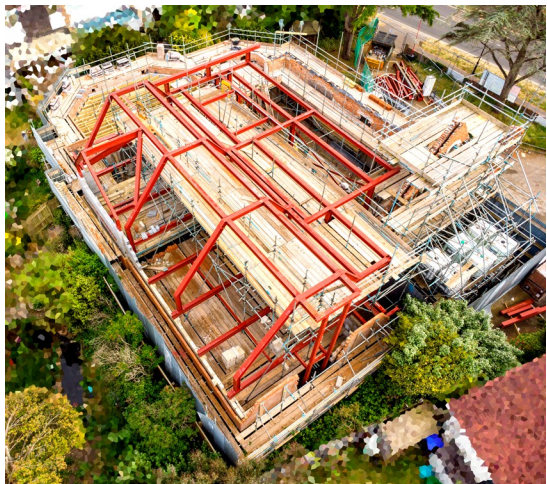
The event highlighted the strong relationship between Avon Reach and the local church community, showing the importance of bringing people together for a shared cause. Residents thoroughly enjoyed being part of such a lively community event, while the funds raised will help support the ongoing rebuild project at All Saints Church Mudeford, ensuring it remains a valued place for worship, support and community gatherings for years to come.

Editors Note: article provided by Avon Reach with thanks to Ruth and the staff for its use in the Anchor.

All Saints Church – rebuilding progress report

Considerable progress has been made with the rebuilding of our church over the last two months. Whilst the wooden roof beams for the church are now being manufactured, the steel structure for the new hall roof has been completed. This was a large job involving a giant crane to lift the steel beams into place. Nine tons of wooden beams are now being put into place as the first stage of installing the roof structure and making this part of the building weathertight.

Work on the ground floor has continued apace and the new layout can be clearly seen.

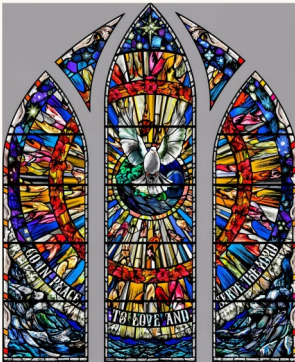


There is now space for the new staircase and lift to be installed in due course.

The next stages of the work involve the creation of the church roof during June and then work will start on the east end of the church and the new entrance lobby.



A faculty for the west window has now been granted. This is a new design based originally on a design by Sylvia Kent and developed by Sally Clifford and a church design team and Holywell Glass. It is very exciting and will be



known as The Pentecost Window. When the Council's Conservation Officer visited the site recently she commented that this was a really exciting design and would definitely be a feature of the rebuilt church.

Tony Eden – Chairman of the Rebuild Steering Group

ALL SAINTS MUDEFORD

*FRESH VISION - BLENDING
OLD AND NEW*

Editors footnote: the West Window design will feature strongly in our marketing campaign for the Mudeford Arts festival.



Our Church Garden battles on!!

Charity of the Year Event: Abseiling the Spinnaker

Avon Reach Nursing Home, owned by Colten Care, have made us their charity of the year for 2026. They will be running several events over the remaining months of the year in support of our fund-raising. On Sunday 3rd May Ruth, the manager, and Denise, one of the staff, travelled to Portsmouth accompanied by a team of supporters from Colten Care. A mini-bus, with three residents, made the journey and were greeted at Portsmouth by Ruth, Denise and a large number of people from Colten Care who had travelled separately. Sue Rigden, Hetty and I went there on behalf of All Saints. Below are two different perspectives of the day, with the same conclusion of success and astonishing bravery. All this follows last year's parachute jump in Salisbury, which also supported us. Thank you to all of you in the congregation, who have sponsored this. The Avon Reach network have also been obtaining sponsorship and it remains open for four weeks. Approximately £1,000 has been raised so far.

John Ward

John and I were asked to support Ruth and Denise with their attempt to abseil down the Spinnaker. We were happy to accept an invitation to travel in the care home's minibus.

On arrival at the home we were asked if we had any allergies as they were providing lunch for us.

Leaving Mudeford about 12.30p.m we travelled with three people who live in Avon Reach. We arrived in Portsmouth about 2.30pm. We were well looked after, given lunch and continually being asked if we wanted anything. This gave us a glimpse into what life could be like in the future!



Watching the abseiling I was in awe of the ladies who may have regretted offering to do it. It looks a frighteningly long way from the top to the bottom. It was a lovely sunny day but quite windy. Both ladies managed to do the abseil.

They were extremely courageous and we are very grateful to them for their support.

Hetty Ward

It was terrifying enough simply watching Ruth and Denise abseil 100m down the Spinnaker Tower – most of us will never know how they found the courage to step off and everyone was relieved when they arrived safely on the ground despite sometimes being caught by the wind.

The church family at All Saints are not only extremely grateful but also very humbled to know that Ruth and Denise did this for us to help raise funds for the refurbishing of our rebuilt church and community hall. **Thank you-** even **very much** simply isn't enough!

Sue Rigden

The Avon Reach Perspective.

Following the success of last year's skydive, Ruth and Denise took on an exciting new challenge to raise funds for All Saints Church.

On Sunday 3 May, Ruth, Home Manager, and Denise, Companionship Team Leader, abseiled more than 100 metres down the iconic Spinnaker Tower. They were supported throughout by cheering residents from Avon Reach, along with representatives from All Saints Church.

The challenge tested both courage and determination, as they descended from a height of 100 metres above sea level. Along the way, they were treated to breathtaking views across Portsmouth Harbour, the Solent, and as far as the Isle of Wight.

Upon arrival, Ruth and Denise were taken to the tower's viewing platform, where they were fitted with full safety gear and securely harnessed by a team of expert abseilers before receiving a comprehensive safety briefing. They were then guided to the external hatch, where their harnesses were attached to dual safety lines, marking the start of their unforgettable abseil experience.

Residents who attended: Michael Penn, Jenny Stevenson, Bruce Eynon

Church representatives who attended: John and Hetty Ward & Sue Rigdon

**So far, the funds raised are:
£1065.00**

GoFundMe: £620.00

Cash Donations: £445



Quotes:

Home Manager: Ruth Wildman “really proud that we did it, an experience never to be repeated!”

Companionship Team Leader: Denise Marks “I was absolutely terrified, but we did it!! So proud of us both and the money we have raised for All Saints Church”

Resident: Micheal Penn “A truly amazing experience to watch both of them abseil from a very high height. Rather them than me! From us all at the home we couldn't be prouder of them.”

Editors Note: article provided by Avon Reach with thanks to Ruth and the staff for its use in the Anchor.



Some thoughts from Japan

Japanese people are very polite and respectful. If you are lost they will go out of their way to show you the right road or building.

They like to be very clean, some people bath morning and night time and they have numerous spas and hot tubs where people bath naked. People with tattoos cannot go in the spas.



Whilst there we saw no parking on any roads, it is all at the side of buildings or in car parks, also no yellow lines.

People take their litter home and do not leave it on the street, or in cars or coaches. (They call litter trash, this has come from America also strollers for pushchairs)

Their diet is very healthy and many live well into their nineties, so the government has raised the pension age and we saw many people working well into their sixties.

They have many dams in the north of the country which provides them with



cheap hydroelectricity. The government subsidises cheap petrol.

We did not see any cattle, sheep, pigs, or horses whilst travelling the country and were told they are raised in the north or inside!

The bullet train runs exactly to the minute. It only stops two minutes in stations, so one must be absolutely ready to alight or get on. The guard will



be outside the train counting down the seconds on a laptop. The stations are large with many shops and cafes inside. Osaka Station had twenty- seven platforms!

Anyone homeless or begging in the street, is taken to a hostel to be helped.

The Japanese love their parks and beautiful gardens and the young people love to dress up in the traditional Kimonos for occasions. We watched a traditional wedding party having photographs taken. We did not see

any torn jeans, off the shoulder tops, or people with rings in their noses or lips!

There is much industry in the cities and we saw many factories and of course lots of car companies.

The tea ceremony is much enjoyed, though coffee is taking its place with younger people. Surprisingly, English is now listed underneath many signs and notices, as tourism grows. It was such a different place to experience.



My Miniature Japanese Garden



Valerie Young.

A Japanese Garden in High Wycombe

You will no doubt be familiar with the National Garden Scheme. In 2025 they donated £3,875,596 to charities ranging from Parkinson's UK to Horatio's Garden. The scheme gives visitors unique and affordable access to some 3,300 private gardens and raises large amounts of money for nursing and health charities. Helping garden charities falls in to the second of these categories as gardens are so important for health and wellbeing.

On a recent visit to friends in High Wycombe we came across an extraordinary Japanese garden which is part of the scheme and is within half a mile of our old home. The house is owned by former professional footballer Alan Mayes (Chelsea) and the project has taken him some years to complete. He consulted a garden designer and employed a builder for much of the work.

High Wycombe is located in the Chiltern Hills and this garden is on a very hilly plot which falls away quite dramatically to the south and east. When we visited, we were ushered around the outside and into a pretty but fairly

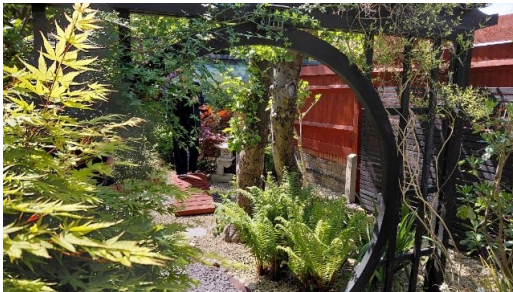
standard back garden. At what we thought was the end of the garden was a wooden screen with opaque white panels. When we were joined by the other visitors it was



time for "The great reveal". Alan slid the doors open and we saw a secret Japanese garden unfold before us. We were standing at the top of a waterfall and as we descended on the nearby path, we admired the irises and Japanese bridge. It was too late to see the cherry blossom but we were



very impressed with the peony roses and, in particular, the acers. A local carpenter had created the moon gate and the decoration on



the tea house. I have always loved the idea of a secret garden (probably because of a certain novel written by Frances Hodgson Burnett) and this one is so unexpected.

The weather was perfect and as we enjoyed a coffee with Alan, he showed us the photographs of the development of the project. It was a truly memorable visit. Admission was by a £4 donation to the National Garden Scheme.



We are now keen to explore some of the gardens in Dorset. Gardens are open until September and you can find the information booklet in the library. Alan takes bookings to see his garden.

For more information about the National Gardens Scheme see www.ngs.org.uk

Vikki Miller

Answers to the 3 Questions posed in the April/May Anchor

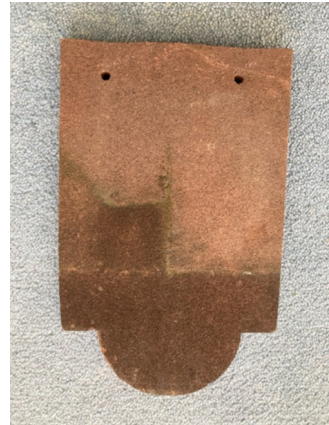
1) What is this?

A clay Victorian Club roof tile c.1869 measuring 6.5 inches wide by 10.5 inches maximum length.

2) Where did it come from?

The porch roof of the original All Saints Church, Mundeford

3) What could you do with it?



The most common uses for these reclaimed tiles are, appropriately for this month's Anchor, in the garden. They can be used to shade the roots of clematis plants, which according to experts, like their "roots in the shade and top growth in the sun".

Another popular use is as a decorative edging to paths or borders or why not tile your bird table or hedgehog house, or use in the construction of a bug hotel?

Or, simply keep one as a treasured memento of our old church.

30 of these tiles will be available for a donation (guide price on-line £1.15 – £1.50per tile) at the Summer Fayre unless they have been snapped up first. If interested,

Please contact me on susanrigden@btinternet.com

Mundeford Sea Scouts Celebrate Their 80th Birthday!

When I read that Mundeford Sea Scouts were celebrating an 80th birthday this year, I looked at the book 'Scouting in Christchurch 1907 - 2007.

Scouting was deemed to have started in 1907 following the publication of 'Scouting for Boys' and by 1908 boys from Mundeford, Stanpit and Purewell had formed 1st Mundeford, with the troop winning a trophy at the 1908 Christchurch Regatta.

The troop enjoyed several very active years but WW1 and the lack of leaders meant the troop was closed for some years.

In 1920 came an opportunity to reopen.

All Saints Church was given a beautiful stained-glass window over the altar as a thank-offering from the Ricardo family, and the 2nd Christchurch Mundeford Troup restarted with Scoutmaster F. Ricardo, meeting in the Village Room in Stanpit.

Finding Leaders continued to be difficult, however, and there are no records of the troop from 1923 to 1936. Having reopened in 1937 the troop then closed during WW2.

It was not until 1946 that the Troop became stabilised when, on 6th September, Rev K P FitzGerald became Group Scoutmaster and registered the Troop as 10th Christchurch (All Saints Mundeford). In 1948 the Troop became a Sea Scout Group and in 1975 the title became 10th Christchurch (Mundeford) Sea Scout Group. The Troop has gone from strength to strength over the years with TS Orestes as their Headquarters.

So, 80 years since Rev FitzGerald restarted Mundeford Sea Scouts, the Group can celebrate an 80th Birthday Family Camp and be proud of their success.

Josie Stevens (one-time Mrs Skip when David was the Mundeford Skipper and later Group Scoutmaster).

A Mystery Garden

May 20 - Ann and I visited a local location which could loosely be described as a garden. It is just 12 miles from Mudeford but many say they have never visited – can you guess where?

As in any garden or park, one enjoys the scenery but also the flowers and wildlife. Few flowers in this location but pleasant woodland scenery and abundant wildlife which Ann and I photographed.



Firstly we saw two peacocks and one very kindly put on a full display for us with their ‘magic’ feathers. Peacock feathers get their vibrant, iridescent colours not from pigments, but through a phenomenon where the feather’s scatter and reflect light, enhancing their vibrance.

Just a few minutes later we saw two pheasants courting – nodding to each other before running rapidly across the field to their chosen spot. The sunshine enhanced their bright red heads – often seen just a flash as they fly past.



Finally, sitting in the café, we saw an area set aside for nesting Oyster catchers. One adult conveniently posed on the wall to have his or her photo taken.



Seeing these three birds were merely the highlights on an enjoyable three hour visit and walk in the parkland. These are two vistas from the walk – which probably give the game away about the location.

Paul & Ann Smith (answer on bottom of page 21)

Puddings and Desserts Quiz (cryptic clues)

1. What do you do to start a race? (4)
2. Ban...an...a (6,5)
3. Richard is suffering from acne (7,4)
4. State in the oven (5,6)
5. An idiotic citrus fruit (5,4)
6. Clowns' missiles (7,4)
7. Praise of the baggy trousers (13,5)
8. Do you make money from these small breads? (12)
9. Gluey, chewy dessert (6,6,7)
10. Autumn is too early for this pudding (9,7)
11.but too late for this one (6,7)
12. This pudding does not amount to much (6)
13. ELPPA (5,8)
14. Fruit for an operatic diva (5,5)
15. First woman – her dessert (4,7)
16. A dessert expertly made in Derbyshire (8,4)
17. Does this dessert get in a paddy (4,7)
18. Not a sandwich cake but close (5,3,6,7)
19. Best wear your boots for this American dessert (11,3,3)
20. Granny Smith disintegrates (5,7)
21. Eaten in Whitby (or Malham) (9,7)
22. An idiot making a crowd of three (10,4) see page 42

FROM A MUDEFORD GARDEN.

From the bottom of my garden I hear bees murmur.

There is something therapeutic about their drone.

They are at the boundary this afternoon in summer,

Of the unpredictable world and my home.

My garden is Eden. An intimate paradise

Where I imbibe the warm elixir of the sun.

I raise my glass, clink the ice say. “ Bon appetite! ”

Rosemary from the breeze tells me the lamb is done.

Seagulls are now circling overhead, and the sky

Is painted pearly white by soft hued clouds

And some of the bees now fly contentedly by,

Satiated by nectar and homeward bound

Tomorrow I'll leave Mudeford. Plunge into the sea

Of traffic and commerce. But Sunday is for me.

Tom Murphy

Welcome to Brownsea Island

Your Brownsea adventure starts here. Waymarked walking trails take you across the island to the visitor centres, bird hides, beaches, natural play areas and much more. Take a walk through the woodland or down to the lagoon and you'll see a variety of wildlife from birds and squirrels to dragonflies and butterflies. Enjoy your visit to Brownsea!



Paul and Ann Smiths
mystery walk

Summer Arrivals

My visitors are on the way
I can't wait to see B
Beatrice I call her
She is a Honey.



Often arrives with Ant
Not sure about him
Restless little character
Invades us with his mates
Would take over
If not controlled.



Great friend of Cat
A Pillar of society
She isn't popular either
Not really welcome
Just lays around all day.



So different to the Admiral
So left wing, colourful
We call him the Red Admiral
He only stays awhile
Then leaves.



What a life eh?
Blooming lovely I say.
Rose is my name by the way
I'm a Climber
Some would say the social variety
But I'm Hybrid you know,
That's me to a Tea.



David Williams

Mothers' Union

The Mothers' Union usually meets monthly at 3.30pm in the lounge of the Methodists' Church in Mudeford Lane, also weekly for prayers at 10am on the remaining Mondays. All meetings are open to anyone who is interested and would like to know more about this world-wide organisation.

On 25th March the Deanery Lady Day Service was held at St George's Church Jumpers. Rev Terry Roberts had prepared the service and officiated. Members from all branches of the Deanery attended and the banners were displayed.

On 13th April Caroline Scull came and spoke about the MU Literacy and Development Programme, which is doing so much to enable women to receive an education and then go on to develop their own business. Very often the money they earn enables them to buy uniforms for their children, without which they cannot attend school, also a health insurance, which means they can take their children to a clinic when they need medical treatment.

The May Branch Meeting on Monday 18th was our annual Novena Service – Thy Kingdom Come. In June Paul Smith will be showing more of his photographs, Poole Harbour as seen from his drone.

At the July meeting on 6th we will share information about the Mothers' Union in recognition of the 150th anniversary. Christine Clode, as diocesan archivist will join us and share some of her extensive knowledge of MU history.

For more information or if you are interested in becoming a member, please contact Mary Thomas or speak to any of our members.

Art Group

The All Saints Church Art Group now gathers behind Stanpit Village Hall, in both the Maberley Room and the Harbour View Room above it, on the fourth Saturday of every month from 9.30-11.30am.

We have a concession from the Club opposite to park in their forecourt. We must vacate it before midday please and they ask that we park towards the front.

This group welcomes everyone with an interest in sketching and painting, from beginners to those with years of experience. Pictures for inspiration will be provided, but people are welcome to bring their own photographs of any subject that interests them.

The next meeting will be on Saturday 27th June

We will be painting Rivers, Streams and Waterfalls.

In July our topic is the sea and all things connected to it.

For more information please contact Mary Thomas

Climbing Roses: Thanks to Ann Smith





*Find your way home,
with Mitchells*



Mitchells

1963 — TODAY

Get in touch to see what *your home* is worth.

New Milton 01425 616411 **Mudford** 01202 499295 **Highcliffe** 01425 272206

mitchells.uk.com

A Garden Party at the Palace

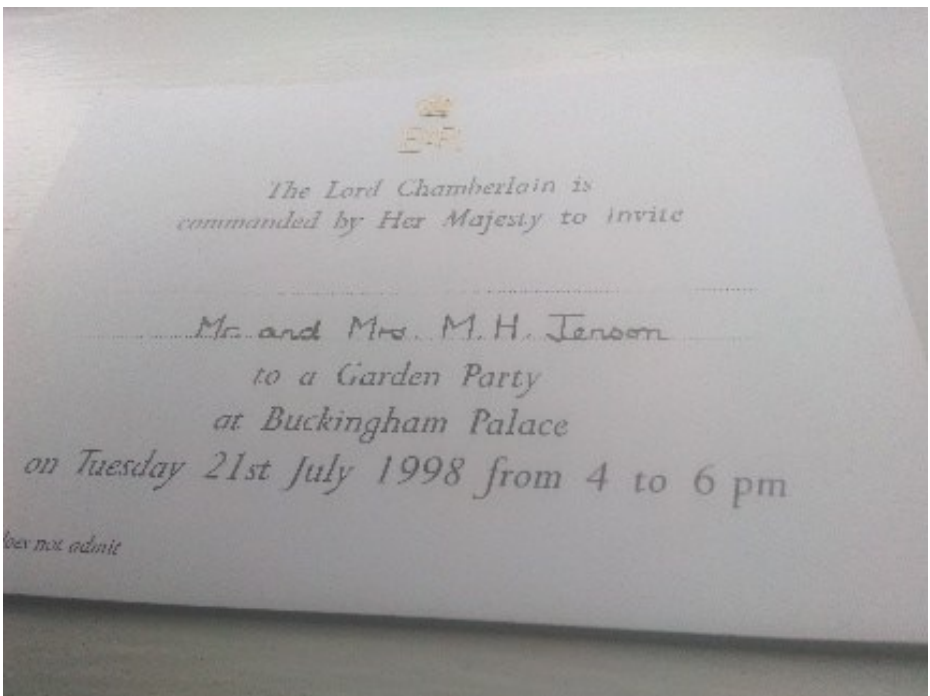
Back in 1998 I was selected to attend a garden party at Buckingham Palace with Mike. Of course, I accepted and shortly received an invitation together with a parking permit for The Mall and a dress code. We arrived and joined a queue to be escorted through a very ornate room to the steps leading down to the garden: a beautiful sight with green and white striped awnings along one side under which were shelves and tables and chairs to sit and enjoy the delicious food.

We had a stroll around the gardens which were stunning with colourful shrubs and flowers and at the very bottom a lake. The stark difference between the concrete front and huge rear colourful garden hidden behind was amazing.



We were then summoned to join the other guests to line up in two facing lines. The Queen and Duke of Edinburgh came down the steps from the Palace followed by Princess Margaret, Prince Charles, Princess Alexandra and her husband and other Royals. The Queen made slow progress along the line of guests stopping here and there to have a guest beckoned forward to meet her. She and the other Royals then retired to a marquee in gold at the far end for tea. A few selected guests joined them. Meanwhile, we sat at a table and were served sandwiches, delicious chocolate cake and ice cream plus of course tea. A number of politicians were there including Margaret and Dennis Thatcher, Tony and Cherie Blair, William Hague and many more including lots of actors

and other famous people. A quite surreal experience. After tea the Queen and Duke of Edinburgh were driven back up to the Palace and the other Royals walked back mingling with the guests. We enjoyed another wander around. It was surprisingly peaceful given the traffic just outside. Housed beneath tents were elaborate toilets complete with full length mirrors and gold taps! Finally, the guests began to leave after such a wonderful and enjoyable afternoon.



Glancing back, we imagined how truly big and magnificent the gardens would be with the tents and marquees removed for an uninterrupted view. A never to be forgotten experience.

Jan Jenson

Blessing of the Waters May 10th

In spite of a chilly and windy afternoon, the annual service of the Blessing of the Waters took place as usual on Mudeford Quay.

The service which is held on Rogation Sunday gives thanks for the harvest of the seas and offers prayers for the safety of our fishermen, for all who use the waters for leisure purposes and for the safety of the Mudeford RNLI lifeboat crews.



This year the service was led by the Revd Wendy Cooper, Associate Priest in the River Mude Benefice. The Christchurch mayor, Councillor Vivienne Charrett thanked All Saints Church for the invitation to attend this

service. Tim Hewett, the lifeboat Operations Manager at the RNLI lifeboat station, said that this was one of the highlights of the year for the station.

Phil Randell conducted the brass band and three hymns were sung as part of the service. The Mayor's Scout and Guide both read lessons which reminded us that the sea was very important to Jesus, just as it is for us today.

Revd Wendy was then rowed out into the run by Peter Dadds, a local fisherman and the Revd Wendy blessed the waters and cast a silver cross into the sea. This tradition goes back many years. The cross



has traditionally been made from spare aircraft parts, which reminds us of the importance of the work that was carried out locally during the second world war in preparation for the D-Day landings.

A collection was taken and the proceeds, amounting to £243.15, was given to the work of the RNLI. **Tony Eden**

Statement from Bishop Robert, Lead Bishop for Safeguarding

Safeguarding in the Church of England is not simply about compliance with guidance or completing the right forms. It is about people and for those of us who seek to follow Jesus, it is about how we live our faith. “It’s Not Just Policy, It’s Personal” is a timely reminder that at the heart of every safeguarding concern is a human being who has taken a brave and often costly step in speaking about harm.

THE CHURCH OF ENGLAND

IT'S NOT JUST POLICY, IT'S PERSONAL

Building confidence in reporting safeguarding concerns

"Act justly, love mercy and walk humbly with your God."

- Micah 6:8

We know that reporting safeguarding concerns can feel difficult. Scan here for resources to help you.

When someone shares a concern, it is important they are listened to and taken seriously. You are not expected to investigate. Keeping people safe and ensuring concerns are recorded and referred appropriately is all of our responsibility.

- Recognise**
Be alert to signs or disclosures of abuse.
- Respond**
Listen carefully and take what is being said seriously.
- Record**
Make a written record of what has been shared.
- Refer**
Share the concern with the Safeguarding Officer and relevant authorities.

'It's Not Just Policy, It's Personal' is a campaign to raise awareness of how to recognise and report safeguarding concerns. The campaign runs from **1st June - 14th June 2026**. The resources are designed to build confidence in responding and taking appropriate action and can be found by searching for

Church of England Safeguarding e-manual

TAKING THE
GREATEST CARE
IN AND AROUND
CHRISTCHURCH



DIGNITY

MOODYS
FUNERAL DIRECTORS
HIGHCLIFFE
01425 687525



DIGNITY



405 Lymington Road
Highcliffe
Christchurch
Bh23 5EN
01425 687525

59 Old Milton Road
New
Milton
Bh25 6DJ
01425 689519

dignityfunerals.co.uk/local

Your Wealth, Managed With Care

At Hannah Dampney Wealth Planning, we understand that your financial journey is unique and therefore your financial plan should be too.

We leverage over 20 years of investment and wealth management experience to provide truly independent financial planning.

With a dedicated and personal service, we aim to help individuals and families make confident and informed financial decisions that stand the test of time.

· Investments · Retirement ·
· Estate Planning · Protection ·

www.hdwp.co.uk

Get in touch for a free
initial consultation:

contact@HDWP.uk
07384 570274
01202 646960

HDWP

Hannah Dampney Wealth Planning
Proudly part of Abacus Financial Options

Hannah Dampney Wealth Planning Limited is a trading name of Abacus Financial Options Ltd. Abacus Financial Options Ltd is authorised & regulated by the Financial Conduct Authority.



The Gardens at Cotehele House by Judy Eden

Whenever we go to Cornwall we like to call in at the Cotehele estate, a National Trust property which sits on the Cornish bank of the river Tamar. It has a perfect position high above the river with gardens and woodland falling down the steep slope. To reach Cotehele you cross the Tamar bridge turn right and continue on for about 10 miles until you see signs to Cotehele. Down narrow lanes, you feel as though you are in a place that time forgot.

The house was built by the Edgcumbe family in medieval times and has had little modernisation as the family subsequently built and moved to Mount Edgcombe at the mouth of the river opposite Plymouth.

You can either park by the river and approach the house through the woods past the old watermill, or you can park up at the house and visit the gardens there. Whatever time of year you visit there is always something of interest.

In the spring, and spring comes early in Cornwall, the gardens and the rougher land around are awash with daffodils of every variety. Then comes the blossom on the many and varied fruit trees in the orchards, some of them very old varieties. Behind the house there is a formal garden with very attractive herbaceous borders and down from the front of the house to the river are many terraces with trees, perennials and shrubs. There is an ancient stone dove cote and several small ponds with water lilies and other aquatic plants.

In the Christmas season the Great Hall is decorated with a 60ft garland made every year from flowers grown and dried on the estate. It really is a sight to behold!

I recommend a visit to Cotehele if you are ever in that direction.

Image from National Trust website)



Being a Churchwarden

Being a churchwarden is not a job I ever saw myself doing – it was always someone else’s job! Yet, here I am, feeling very under-confident, especially when I look at the long list of what Tony did. I get very nervous and never feel I am able to do what is needed. I look at Tony and Chris and don’t feel I have the skills at all! What a tall order! We are all indebted to Tony for all he has done and continues to do and I am quaking at the thought of trying to follow in his footsteps.

However, whilst I am not confident in my own ability, I believe in offering who I am and all that I have to God in service. For each of my shortcomings, I pray to God to supply what is needed. I am sure that God will work through you all to make up for my inabilities and inefficiencies. To that end, I really hope and pray you will help me.

Following Jesus is always full of surprises and unexpected twists and turns. I am often shocked when I look back and reflect on things I have been involved with; things I was never qualified for in terms of experience; things I never dreamt of doing. However, they were achieved with God’s help. I firmly believe that if we provide the willingness, God supplies the gifts and these can and have changed over the years for me. I’ve no idea what I’m going to be doing in this role, but I will give it my best shot.

I look forward to working alongside Chris and learning from her experience. I pray that you will support me and forgive me for my mistakes and shortcomings.

I will aim to listen and be open to ideas and the willingness to find ways to work together as the Body of Christ, putting God first and, prayerfully, responding to His leading in this place.

Sally Clifford

A Garden in Africa

Angela and I made our first garden in Kenya, where we lived and worked for seven years in the 1960's. The school was expanding and so was the staff. The new bungalow houses were set in generously-sized plots of wilderness: what you made of your plot was up to you – and your gardener. Our allotted plot was at the top of a slope looking down over a field grazed by the school's small herd of Ayrshire cows, red and white, but in the very far distance we had a glimpse, about fifteen miles away, of a small corner of the great Lake Victoria.

From a nearby tree nursery we obtained lots of baby conifers to make hedges to separate our plot from our neighbours' to either side. How those hedges grew! They were beautiful but after several years, we began to feel sorry – and even concern – for our poor gardener, William (a local man of slight build), as he struggled more and more to keep them under control. Wanting shade, we also planted ornamental, flowering trees.

William soon established for us a grove of very productive banana trees. He knew just when to remove the enormous bunches of ripening fruit in time to cheat the voracious Mouse Birds of their fill! The bunch would be set to ripen in the little shed just outside the kitchen, where William would join our cook, Samson, for their late morning meal, and they would together supplement their lunch with the bounty of the delicious banana crop. Over the garage we grew Passion Vines, their purple egg-sized fruit tasty but full of pips! On another side of the garden we grew Papaya trees, male and female, their soft melon-like fruit delicious at breakfast when enlivened with a squeeze of orange.

We were soon blessed with two little boys, their topknots bleached almost white in the strong tropical sun. Our grassy plot was their playground, their friends' too. One morning a week the garden and shady veranda would become host to the playschool that Angela organised for families of friends who came to us from near and far. We also obtained a great big paddling pool (plastic, blue) that we would half-fill with water from a hose pipe, but I don't remember it was ever in use for the playschool children.

At the bottom of the garden, we had a big bed of colourful Canna Lilies brightening our view in all seasons. After an outing to Lake Victoria, we brought back some roots of that stateliest of marginal water plants, the Papyrus, which graces the rivers and lakes of tropical Africa. We routed the waste water from the bathroom and kitchen to create a small marsh near the Cannas. There our Papyrus flourished, reaching great heights, soon after to be joined by Ginger plants, which seemed to enjoy the same marshy habitat.

Halfway through our seven-year posting to Kenya, I got to know as a friend a local expert from the nearby Agricultural Research Station on rearing poultry. He lent his workers to build a delightful little thatched chicken house in the garden at the back of our home. I placed an order for a dozen -or-so young pullets, which arrived by train:

the wonderful old steam-train service, which was still running in those days. Our pullets, well-fed and well-housed developed into fine laying hens, keeping us in eggs for two or three years, and with the excess going to friends.

God be praised! Happy days! Happy memories!

Andrew Walker

NASH SERVICES HANDYMAN

call or text 07743 389293

I'm Toby. I'm local. I'm keen to build a small business while training to be a plumber.

If you need help with a job, please get in touch.

toby@nashservices.co.uk

Painter and Decorator: Interior and Exterior
DRW Godley

Trading for 34 years in all aspects of decoration from hand-painted kitchens to exterior, call for free quote

Quayside Hair & Beauty



2 Falcon Drive
Mudford
01425 273704

Exbury Gardens

On 29th April Marian and myself visited Exbury Gardens and had a great day. This time in April was a good time to visit the gardens although the daffodils had begun to go over.

Exbury Gardens were created and managed by the Rothschild family and border the Beaulieu River, it is a 200-acre informal woodland garden in Hampshire which has a magnificent collection of rhododendrons, azaleas and camellias, all of which were in bloom.

We started our tour by way of a steam train which runs around the gardens stopping at various places. The Steam Railway goes on a journey through a tunnel, around Dragonfly Pond, along the top of the Rock Gardens onto the American Garden and a glimpse of the Japanese Garden all of which we explored at a leisurely pace along various pathways. These stretch for miles and features the Hydrangea Walk, the Rock Garden, Iris Garden, the Sundial Garden, Centenary Garden and Camellia Walk which takes visitors to a path alongside Beaulieu river. The gardens provided a kaleidoscope of colour, a very worthwhile trip.



Derek Chaffey

Mainly Men

An invitation for men and women to join an open group within the life of All Saints Church.

11.30 am on 26th June 2026

At Mudeford Methodist Church

Honeypot

An update on this New Forest charity for children who are carers as they celebrate their 30th anniversary

By

Viv Carter and Debra Rickman

Followed by a Bring and Share lunch - finger foods only, please. All welcome

Contact- Bob Miller on 01425 240146

All Saints Church

2026

SUMMER FAIR

Saturday 13th June
10am to 1.00pm

STANPIT VILLAGE HALL

FREE ENTRY

JOIN US FOR LOTS OF FUN!

- refreshments ·
- tombola ·
- bric-a-brac ·
- books ·
- toys ·
- puzzles ·
- cakes/home produce ·
- jewellery ·
- and much more!



For more information about All Saints Church, visit:
allsaintsmudford.org

Expanded Mudeford Office

We are delighted to announce the expansion of our Mudeford office, enabling us to offer an even better service to our clients in a welcoming and professional environment.

Led by Director, Tamasine Whitbread, our experienced and friendly team is here to assist with all your legal requirements, including:

1. Wills, Probate, Tax Planning and Trusts
2. Powers of Attorney and assistance with affairs
3. Residential and Commercial Property matters
4. Litigation matters including matrimonial

Our newly enhanced offices now feature comfortable private meeting rooms together with convenient ground floor access and on-site parking, ensuring a more accessible experience for all clients.

We look forward to welcoming both new and existing clients to our new-look Mudeford office.



Meesons & Spurlings
Solicitors

Need direction?

Wherever you need to go, we offer a friendly professional legal service

We can provide advice over the telephone, via video conferencing and in person.

Contact us today by telephone or email on:
enquiries@meesons-spurlings.co.uk

Branches at:
Mudeford - 01425 275690
Ringwood - 01425 484420

Wills, Probate & LPAs
Estate & Tax Planning
Conveyancing
Matrimonial
Dispute Resolution

www.meesons-spurlings.co.uk



AVON REACH SUMMER BARBECUE

MUDEFORD, CHRISTCHURCH

SUNDAY 19TH JULY | 12PM-3PM

Join us for our summer barbecue, with live music from Hannah Bushnell and the chance to win a barrow of booze in our raffle.

All proceeds will be donated to our charity of the year, the All Saints Church.

BBQ: £5 PER PERSON



**DISCOVER REFINED LIVING
AT AVON REACH**

Call **01425 272666**

Farm Lane, Mundeford, Christchurch, Dorset, BH23 4AH



Our Vision for Mission:

This Parish seeks to be inclusive in extending God's kingdom, by encouraging the whole community to grow in the Christian faith through prayer and worship, and to care for others through pastoral and practical support.

Answers to the Quiz, Puddings and Desserts

1. Sago
2. Banana Split
3. Spotted Dick
4. Baked Alaska
5. Lemon Fool
6. Custard Pies
7. Knickerbocker Glory
8. Profiteroles
9. Sticky Toffee Pudding
10. Christmas Pudding
11. Summer Pudding
12. Trifle
13. Apple Turnover
14. Peach Melba
15. Eve's Pudding
16. Bakewell Tart
17. Rice Pudding
18. Bread and Butter Pudding
19. Mississippi Mud Pie
20. Apple Crumble
21. Yorkshire Pudding
22. Gooseberry Fool

The magazine is published by Mudeford Parochial Church Council (P.C.C.). Copyrights acknowledged. The Editor reserves the right to change copy or material submitted. No responsibility or liability is accepted by the Editor or P.C.C. for errors or omissions. The views expressed are not necessarily those of the editor, or the Incumbent. Advertisements are not endorsed by the P.C.C. or the Incumbent © 2019 Mudeford P.C.C.

Church website: allsaintsmudeford.org

All Saints Services

Mudford, Christchurch, BH23 3HS

Sunday: 10am at either Stanpit Village Hall or St Luke's, Burton.

Wednesday: 10am at St John's, Purewell.

First Sunday in the month Church In the Round, an informal service at 5-30pm at High Cross Church, Somerford.

4-30pm in the winter.

On the Internet.

See Church web-site or notice board for all details.

www.allsaintsmudford.org.

Facebook at <https://www.facebook.com/parishofmudford/>

YouTube at; All Saints Mudford You Tube Channel.

